

ESTABLISHED IN 1972

**TANKWORLD**

# DIESEL TANKS



📞 1800 68 69 70

🌐 [www.tankworld.com.au](http://www.tankworld.com.au)

📍 Rutherford | Swan Hill | Murray Bridge

# PORTABLE UTE TANKS



## Key Features

- 12v diesel transfer pump, capable of flow rates of up to 32 L/min
- 4m of delivery hose
- 2m of battery cable with on/off switch
- Lockable lid



Nozzle



Pump



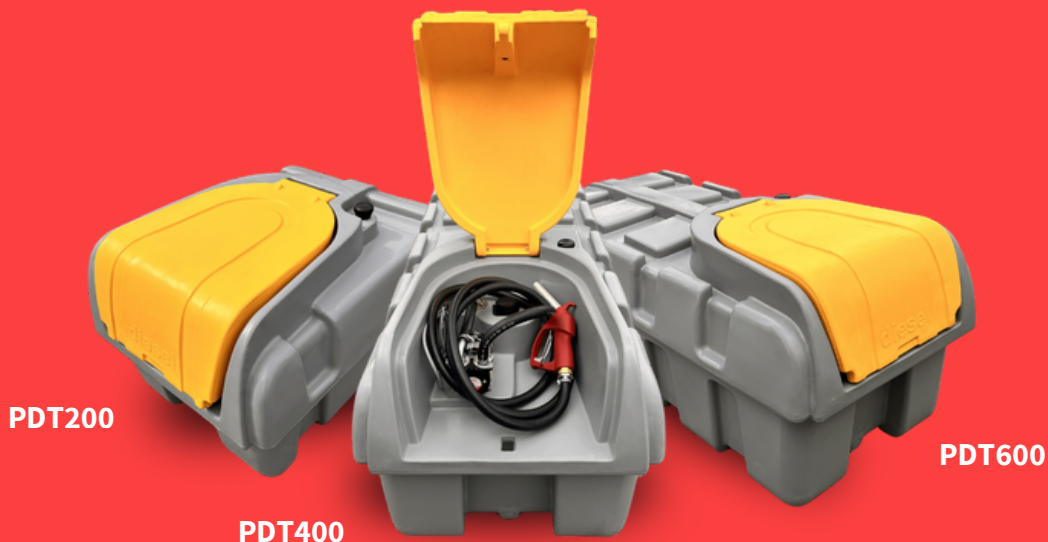
Battery Cable



Lockable Lid

## Product Range

CODE	CAPACITY	DIMENSIONS	FLOW RATES
PDT200	200L	1050L x 750W x 600H	32L / min
PDT400	400L	1620L x 750W x 665H	32L / min
PDT600	600L	1720L x 890W x 755H	32L / min



PDT200

PDT400

PDT600

# SMALL DIESEL TANKS



## Key Features

- Tank Capacity: 1000L
- 1" DOWNDRAFT VENT breather vent
- 2" ALUMINIUM CAMLOCK - TOP FILL ASSEMBLY
- ISO9001:2015 Certified
- 1 Piece Construction

## Product Range

CODE	CAPACITY	TANK + FUEL KIT
DT1000	1000L	DT1000 + 52002



DT1000



1

Diesel Transfer Pump

## DIESEL TRANSFER PUMP

- Uses: Diesel fuel transfer only
- Voltage: 12V DC
- Current Drain: Approx. 22 amps
- Max Working Pressure: 2,600 rpm / 22 psi
- Inlet / Outlet / Suction Lift: 3/4" BSPF / Up to 2 metres

# LARGE DIESEL TANKS



## Key Features

- Stainless steel pipe assy, 2" brass ball valve & 2" camlock
- Clock dial level indicator
- 1" Brass ball valve - Outlet c/w HDPE Protection cover
- 50mm Downdraft vent breather vent

## Product Range

CODE	CAPACITY	TANK + 240V BOWSER
DT5000	4500L	DT5000 + 50070P
DT10000	9000L	DT10000 + 50070P



# DIESEL BOWSERS



## Key Features (Both)

- Meter accurate to  $\pm 0.5\%$  -  $\pm 1\%$
- Includes self-priming vane pump, meter, intake filter, support bracket and built-in nozzle holster
- Flow rate 70 L/min

## Key Features (51090P)

- Local memory capable of storing data for the last 200 deliveries
- Records date and time of dispensing
- 10 x Magnetic user keys for identification
- Software in USB & Data cable
- IP55 rated 550 watt self priming vane pump

## Product Range

CODE	FLOW RATE	VOLTAGE
50070P	70L / min	240V
51090P	70 / min	240V



# DIESEL MONITOR



## Key Features (Both)

- Standalone Diesel tank monitoring (no reliance on 4G, WiFi, satellite, or internet).
- Subscription-free operation (no ongoing costs).
- Wireless LoRa communication up to 1 km line-of-sight.
- Base Unit with touch display for local monitoring and configuration.
- Accurate Diesel tank level monitoring via pressure sensor.
- Battery level monitoring for both Homebase and Node.
- Compact sensor unit with weather-resistant housing.

## Product Range

CODE	INCLUDED
X42DIESEL	HOMEBASE & NODE WITH SENSOR



**X42DIESEL**

# ALL DIESEL TANKS



## Product Range

CODE	CAPACITY	WIDTH/DIAMETER WIDTH	HEIGHT
PDT200	200L	750mm	600mm
PDT400	400L	750mm	665mm
PDT600	600L	890mm	755mm
DT1000	1000L	1130mm	1220mm
DT5000	4500L	2000mm	2100mm
DT10000 ZONE 1&3	9000L	2700mm	2350mm
DT10000 ZONE 2	9000L	2380mm	2485mm



PDT200

DT5000

DT1000

# DELIVERY

## DELIVERY & SAFE AREA ACCESS

To deliver your tank without damage, please notify Tankworld before delivery if there is insufficient space for our delivery truck to turn around, or if there are any obstacles (trees, gates, overhead powerlines) that may prevent safe delivery. Our driver will conduct a site assessment on arrival. If the site is unsuitable, the tank will be unloaded at the nearest safe location, and any relocation will be at the purchaser's expense.

*Please note: If the site is unsafe or inaccessible, our driver will choose an alternative safe location. Customers must be on-site and able to assist with positioning the tank. Any additional lifting equipment or services are at the purchaser's cost. Any damage caused by the trucks when entering the site as instructed will be at the repair of the owner.*

## IMPORTANT NOTE FOR DELIVERY & SITE ACCESS

Truck & Trailer length: 19m  
Width clearance required: 3.5m  
Height clearance required: 4.9m

Common obstacles include low power lines, narrow gates, inaccessible roads, steep driveways, roundabouts, crossings, overhanging branches, uneven surfaces, and soft or wet ground.

## SITE PREPARATION REQUIREMENTS

- Base must be level and stable, supporting the entire tank base area at all times.
- Preferred base: Smooth, level natural ground, free from rocks/stones, 600mm larger than tank diameter.
- Alternative: 75mm (3") sand base with retaining beam (cement sprinkled on exposed sand).
- Premium: Level concrete base.
- Do not use road base. Use crusher dust or brickies sand if raising the base.

# DELIVERY (CONT.)

## DELIVERY TIMES

- Final confirmation provided ~2 weeks prior.
- Changes cannot be made after manufacturing begins. (1 week prior)
- Delivery Monday - Saturday

## ASSISTANCE REQUIRED FOR TANK POSITIONING

Capacity (Litres)	Number of People Required
200L - 600L	2 Person
1000L - 10000L	Machinery Required (e.g. forklift)

## CUSTOMER'S RESPONSIBILITY

It is the customer's responsibility to get the tank secured and adhere to the council's policies and regulations.

## MORE INFORMATION IS AVAILABLE AT:

<https://www.tankworld.com.au/delivery/>  
<https://www.tankworld.com.au/installation/>



**DIESEL**

TANKWORLD

Tankpool  
175,000  
Liters

ESTABLISHED IN 1972  
**TANKWORLD**



☎ 1800 68 69 70

🌐 [www.tankworld.com.au](http://www.tankworld.com.au)

📍 Rutherford | Swan Hill | Murray Bridge

